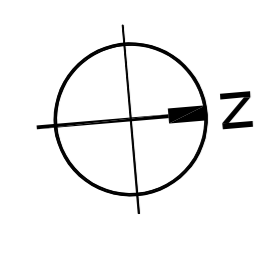
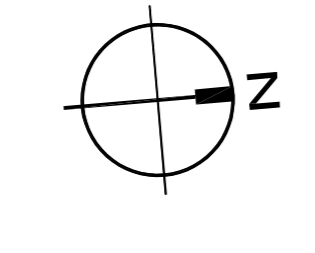
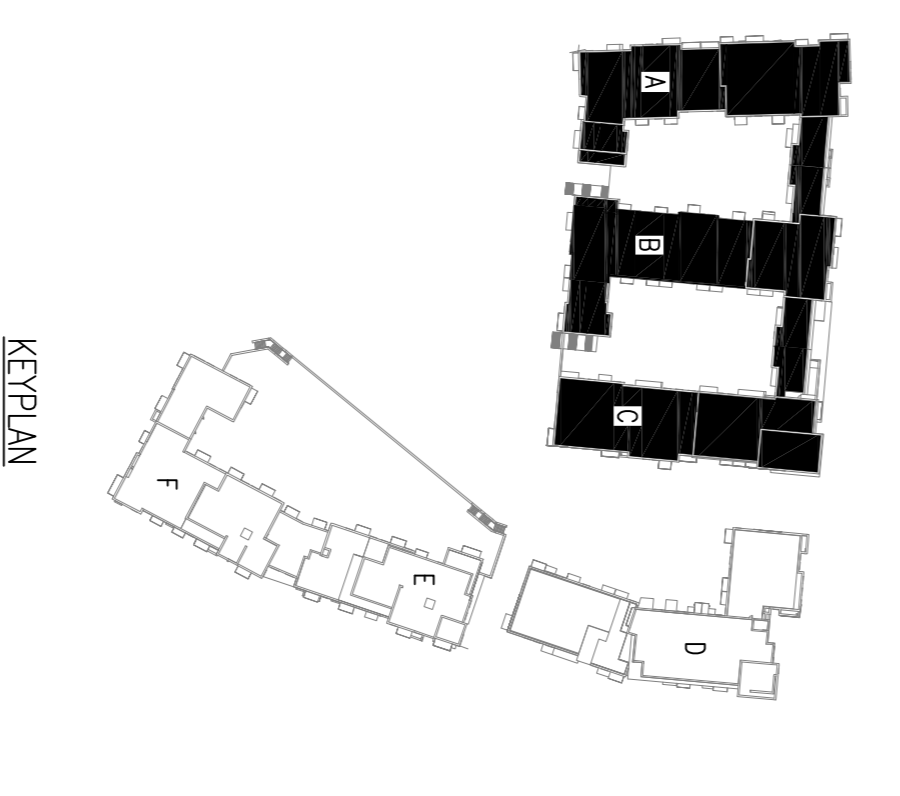


- GENERAL NOTES:**
- THIS DRAWING IS TO BE READ IN CONJUNCTION WITH ALL RELEVANT ARCHITECTS AND STRUCTURAL ENGINEERS CONSTRUCTION ISSUE DRAWINGS, FIRE CERTIFICATE & FIRE AND ANY OTHER DOCUMENTATION.
  - DO NOT SCALE FROM THIS DRAWING. THIS DRAWING IS REPRESENTATIVE ONLY. ALL DIMENSIONS SHALL BE TO FACE UNLESS OTHERWISE STATED. USE THE PROPOSED DIMENSIONS WHEN SHOWING WORK.
  - THE EXACT LOCATION OF SERVICES AND FITTINGS TO BE AGREED ON SITE WITH THE ARCHITECT AND/OR MECHANICAL OR STRUCTURAL ENGINEER PRIOR TO THEIR INSTALLATION.
  - THE MECHANICAL AND ELECTRICAL SERVICES ARE TO BE CO-ORDINATED WITH ALL OTHER TRADES AND TO BE AGREED ON SITE PRIOR TO THEIR INSTALLATION. THE CONTRACTOR SHALL ALLOW FOR THE SETTING OUT AND INSTALLATION AROUND ALL OBSTRUCTIONS. WORK SHALL NOT BE CONSIDERED COMPLETE UNTIL THE CONTRACTOR DUE TO THE LACK OF CO-ORDINATION WITH OTHER TRADES.
  - CONNECTIONS TO ALL EQUIPMENT TO BE MADE BY THE CONTRACTOR.
  - FIRE, SMOKE, EXHAUST, FRESH AIR, COLD/ WARM WATER, PRESSURE POINTS AND FIRE BARRIERS SERVICES PASS THROUGH A FIRE WALL/ COMPARTMENT OR FLOOR.
  - ANY DISCREPANCIES BETWEEN THIS DRAWING AND ON SITE CONDITIONS MUST BE REPORTED TO RENAISSANCE ENGINEERING LTD. IMMEDIATELY. ANY CHANGES FROM THIS DESIGN DRAWING MUST BE AGREED WITH THE ENGINEER IN WRITING. A FAILURE TO OBTAIN THIS APPROVAL COULD LEAD TO DIFFICULTY IN APPROVING PAYMENT FOR THE WORKMANSHIP.
  - INSTALLATION/ CONSTRUCTION/ AS-BUILT DRAWINGS TO BE PREPARED WITH REFERENCE TO THE RELEVANT STANDARDS AND STRUCTURAL DRAWINGS TO BE PREPARED WITH REFERENCE TO THE LATEST RELEVANT STANDARDS AND STRUCTURAL DRAWINGS TO BE PREPARED WITH REFERENCE TO THE LATEST RELEVANT STANDARDS.
  - ALL WORKS TO COMPLY WITH THE NATIONAL CODE OF PRACTICE FOR CUSTOMER INTERFACE 4th EDITION 2008.

- GENERAL SERVICES NOTES:**
- ELECTRICAL SERVICES INSTALLATION TO COMPLY WITH EICL RULES E1101:2008.
  - ALL WORKS TO COMPLY WITH THE NATIONAL CODE OF PRACTICE FOR CUSTOMER INTERFACE 4th EDITION 2008.
  - ALL ESCAPE ROUTES SHOULD BE PROTECTED BY FIRE RESISTING CONSTRUCTION AND SHALL BE PROTECTED FROM THE EFFECTS OF OVERHEATING. ALL ESCAPE ROUTES SHALL BE PROTECTED BY FIRE RESISTING CONSTRUCTION AND SHALL BE PROTECTED FROM THE EFFECTS OF OVERHEATING. ALL ESCAPE ROUTES SHALL BE PROTECTED BY FIRE RESISTING CONSTRUCTION AND SHALL BE PROTECTED FROM THE EFFECTS OF OVERHEATING.
  - SOCKET OUTLET RING CIRCUIT WIRING USING 2.5sq mm PVC CABLES AND/OR RDM4 CIRCUIT BREAKERS USING 4.0sq mm CABLES IN TRUNKING OR CONDUIT PROTECTED BY RDM4 RING CIRCUIT BREAKERS.
  - SOCKET OUTLET BOXES WIRING USING 4.0sq mm PVC CABLES IN TRUNKING, PROTECTION BY RDM4 RING CIRCUIT BREAKERS.
  - EXTERNAL LIGHTING WIRING 2.5sq mm PVC WIRE CABLE, EXTERNAL LIGHTING CONTROLLED BY HAND-OFF-AUTO SWITCH AND PHOTOCELL.
  - ELECTRICAL INSTALLATION TO COMPLY WITH BUILDING REGULATIONS 2016 TECHNICAL GUIDANCE DOCUMENT B, FIRE SAFETY-VOLUME 2 - DWELLING HOUSES.
  - ELECTRICAL INSTALLATION TO COMPLY WITH E1101:2008 422.2.4 LUMINAIRES.

- GENERAL SERVICES NOTES (3+ STORE DWELLINGS):**
- WIRING NOT COMPLETELY EMBEDDED IN NON-COMBUSTIBLE MATERIALS SUCH AS PLASTER, CONCRETE OR OTHERS, NOT PROTECTED FROM FIRE, SHALL HAVE FLAME-RETARDANT CHARACTERISTICS COMPLYING WITH I.S. 2014: PVC-INSULATED CABLES, BACK BOXES WHICH ARE IN THE RATED AREAS ARE TO BE PROTECTED WITH A P85 BACK BOX C/W AN INTERESTING FINISH.

- PHOTOVOLTAIC PANEL NOTES:**
- THE ELECTRICAL INSTALLATION MUST ADHERE TO THE FOLLOWING EICL RULES, NATIONAL RULES FOR ELECTRICAL INSTALLATIONS E1101:2008.
  - WEANS SHALL BE PROVIDED FOR ISOLATING THE PV INVERTER FROM BOTH THE A.C. SIDE (LOADED BESIDE CONSUMER UNIT) AND THE D.C. SIDE. PLEASE REFER TO REGULATIONS 712.462.01 & 712.434.01.
  - PV PANELS MUST HAVE THE FOLLOWING CERTIFICATIONS:  
    - EC681216/EN61715 - DESIGN QUALIFICATION AND TYPE APPROVAL
    - EC681216/EN61730 - PV MODULE SAFETY QUALIFICATION-REQUIREMENT FOR CONSTRUCTION
    - EC6812162 PV 1917/05.11 - PHOTOVOLTAIC MODULES - AMMONIA CORROSION TESTING
    - EC681210 - SOLI WAST CORROSION TESTING OF PHOTOVOLTAIC (PV) MODULES



Rev.	Date	Revision Description	By	Chk'd
P1	23/01/2017	ISSUED FOR INFORMATION	CM	MH
P	22/08/19	ISSUED FOR INFORMATION	CM	MH

**RE** Renaissance Engineering Ltd.  
 Board House, 9-10 Lower Bridge Street, Dublin 8.  
 Telephone: +353 (0) 1 879 0820  
 www.renaissanceengineering.ie

**CLIENT:**  
 GREENLEAF HOMES LTD.  
**ARCHITECT:**  
 FERRERA ARCHITECTS  
 400 THE  
 GREENLEAF HOMES LTD.  
 ARTON ROAD, TALLAGHT,  
 DUBLIN 24

**DRAWING TITLE:**  
 GENERAL SERVICES LAYOUT  
**ROOM LEVEL:**  
 BLOCKS A, B & C

**Scale:**  
 1:200  
**Sheet No.:**  
 19-116  
**Drawing No.:**  
 62-10  
**Revision:**  
 P1

**Date:** 16/08/19  
**Scale:** 1:200  
**Sheet No.:** 19-116  
**Drawing No.:** 62-10  
**Revision:** P1